



Payroll Professional

Release Notes - 2025 Update 2

August 2025

IRIS. Look forward

Contents

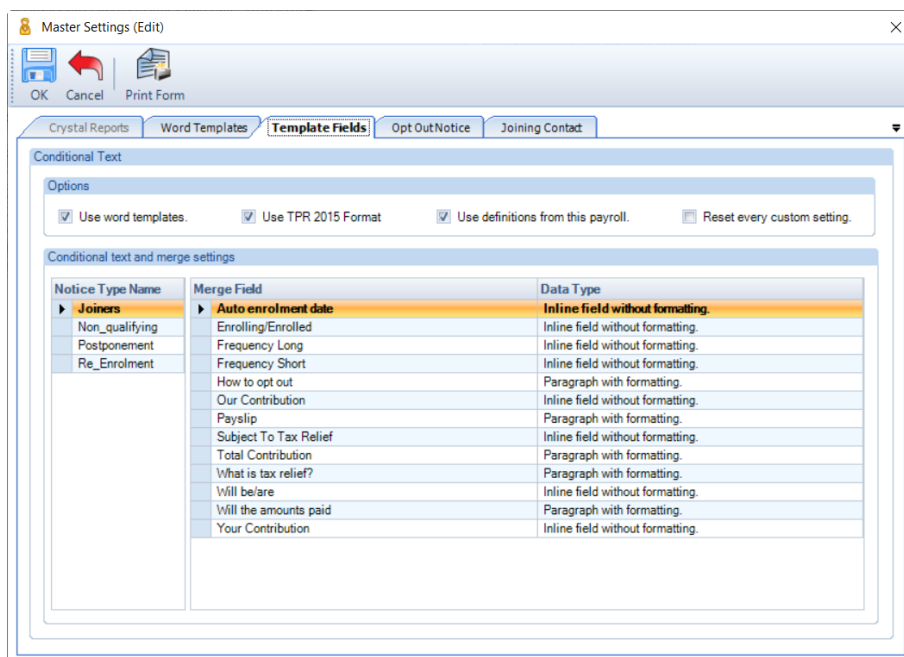
Important Information.....	1
Auto Enrolment Module	1
HMRC Notifications (aka DPS) – Microsoft WSE 2.0 SP3.....	1
Statutory Changes.....	3
Employee Details – Benefits in Kind tab.....	3
Program Changes	4
Employee Verification Connector	4
Enhancements	5
Import menu	5
Technical Changes.....	6
Auto Enrolment Dashboard – Emailing Notices	6
Access Payroll Data File(s)	6
Microsoft Access Databases and Drivers	7
Fixes	11
Standard Reports	12
All Report Changes.....	13
Custom Reports.....	13
On-line Help File	13
Index	15

Important Information

Auto Enrolment Module

In a future release we are looking to remove the Notices for Word and Crystal reports that could be produced before The Pension Regulator slimmed down the number of notices to four from 2015 – Joiners, Non-qualifying, Postponement and Re-enrolment.

To check what notices you are using, in each payroll, open the **Auto Enrolment Dashboard** select **Setup\Notices Settings\Master Settings** then click on the tab **Template Fields**:



If you have **Use TPR 2015 Format** ticked, then this change will not affect you. If, however, **Use TPR 2015 Format** is **NOT** ticked, you will need to change your set up to use the TPR 2015 Format.

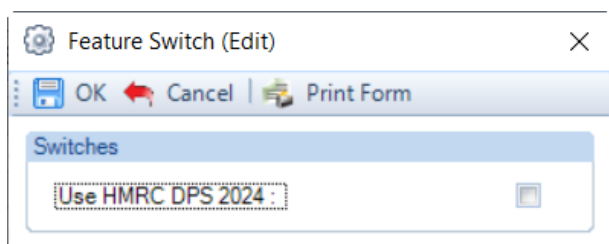
HMRC Notifications (aka DPS) – Microsoft WSE 2.0 SP3

In the Release Notes for 2024 Update 1, you were informed of an alternative method for downloading HMRC notifications, instead of using Microsoft WSE 2.0 SP3. This option uses standard https technology which is part of Microsoft .Net Framework.

In a future release the use of Microsoft WSE 2.0 SP3 will be removed.

We recommended that you enabled the option, as follows:

Under **Admin** select **Advanced Config**:



Tick the box **Use HMRC DPS 2024**, to use the the standard https technology instead of Microsoft WSE.

If you experience any issues downloading using this method, please inform support. You can un-tick the option to go back to using Microsoft WSE.

If you do not experience any issues, you can uninstall Microsoft WSE 2.0 SP3 from each workstation.

Changing the download method will not change how the DPS works in IPP, its just the technical method used to obtain the information from the HMRC.

Statutory Changes

Employee Details – Benefits in Kind tab

HMRC have confirmed that **Off Payroll Workers** are not classed as employees for tax purposes and therefore Benefits in Kind cannot be provided for them. We have therefore changed the **Employee details** screen to hide the **Benefits in Kind** tab when **Off Payroll Worker** is ticked under the **Payments** tab of the **Employee details** screen.

Program Changes

Employee Verification Connector

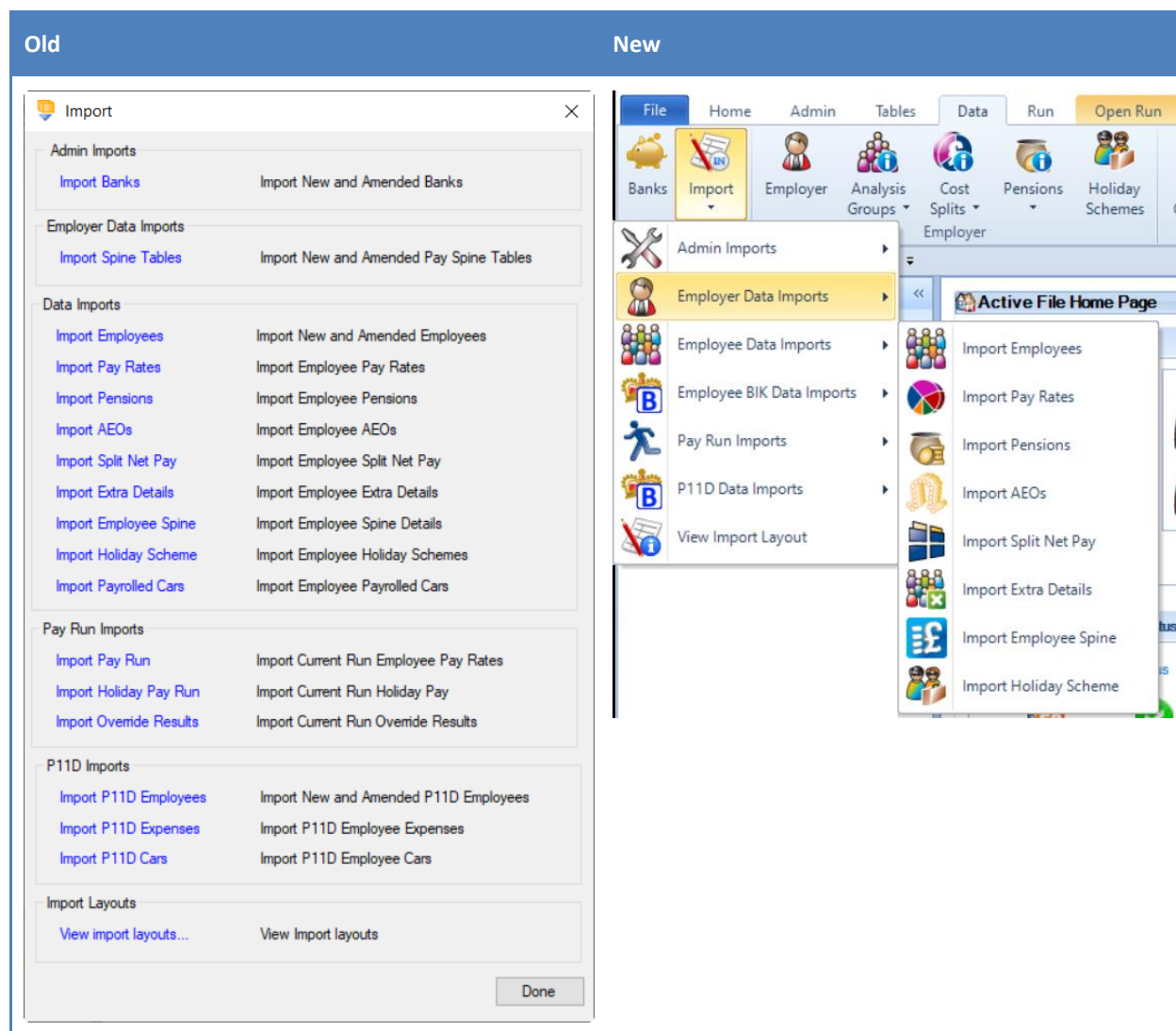
Once an Employer has been opted out of Employee Verification Connector, no Employer identifiable information is sent to EVC after a successful Full Payment Submission is performed.

If you have Parked or Paused an FPS submission, then installed an update to IPP where the version of EVC has changed, the EVC information will be re-created and sent to EVC after the FPS has been successfully received by the HMRC.

Enhancements

Import menu

The **Import** menu accessed from the **Data** tab has been changed to a drop-down menu, which is grouped in the same manner as the original import menu form:



When you select **Employee BIK Data Imports** under **Data\Import**, you will see additional imports which are disabled, these are work in progress for the mandating of payrolling benefits from April 2027.

Under the **Open Run** tab when you click in the **Import** button rather than selecting from the drop down, this now opens the **Pay Run Import Wizard**.

Technical Changes

Auto Enrolment Dashboard – Emailing Notices

To be able to email notices, in addition to the existing prerequisites you also need to update the Configuration file called Star.Payroll.GUI.exe.config under the Program Directory shown under Help\Paths & Files to include the following within the RunTime section, for each workstation:

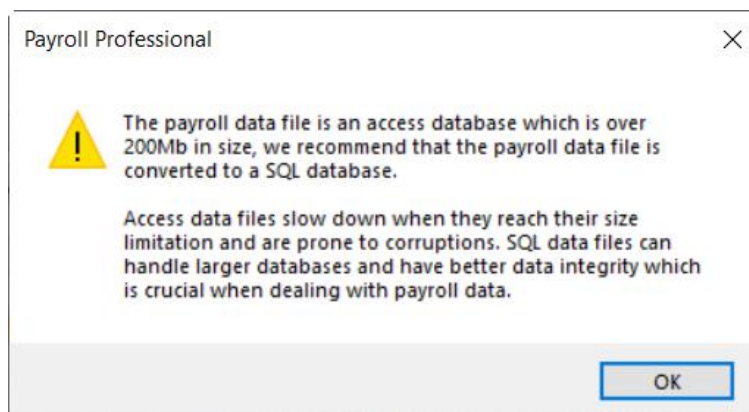
```
<dependentAssembly>
<assemblyIdentity name="MimeKit" publicKeyToken="bede1c8a46c66814" culture="neutral" /> <bindingRedirect
oldVersion="0.0.0.0-4.11.0.0" newVersion="4.11.0.0" />
</dependentAssembly>
<dependentAssembly>
<assemblyIdentity name="MailKit" publicKeyToken="4e064fe7c44a8f1b" culture="neutral" /> <bindingRedirect
oldVersion="0.0.0.0-4.11.0.0" newVersion="4.11.0.0" />
</dependentAssembly>
<dependentAssembly>
<assemblyIdentity name="AngleSharp" publicKeyToken="e83494dcdc6d31ea" culture="neutral" />
<bindingRedirect oldVersion="0.0.0.0-1.2.0.0" newVersion="1.2.0.0" />
</dependentAssembly>
<dependentAssembly>
<assemblyIdentity name="System.Text.Encoding.CodePages" publicKeyToken="b03f5f7f11d50a3a"
culture="neutral" /> <bindingRedirect oldVersion="0.0.0.0-9.0.0.3" newVersion="9.0.0.3" />
</dependentAssembly>
```

Access Payroll Data File(s)

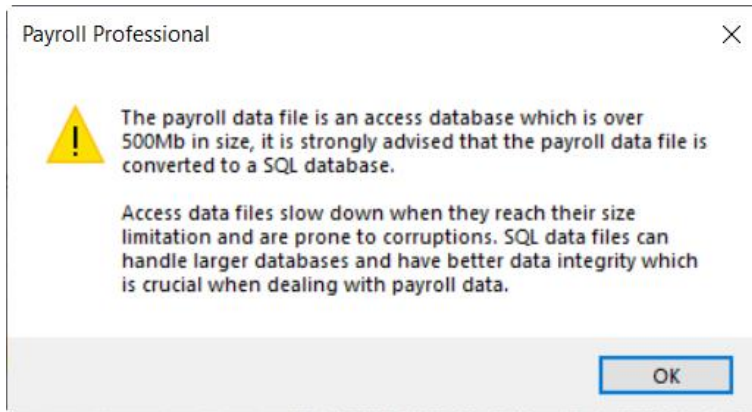
Access has a size limitation which means that when the data file reaches this limit they slow down and are prone to corruptions.

The following warning messages will now be shown based on the size of the access payroll data file when the payroll is opened in IPP whichever method is used, until the size of the access payroll data file has been reduced or converted to a SQL database:

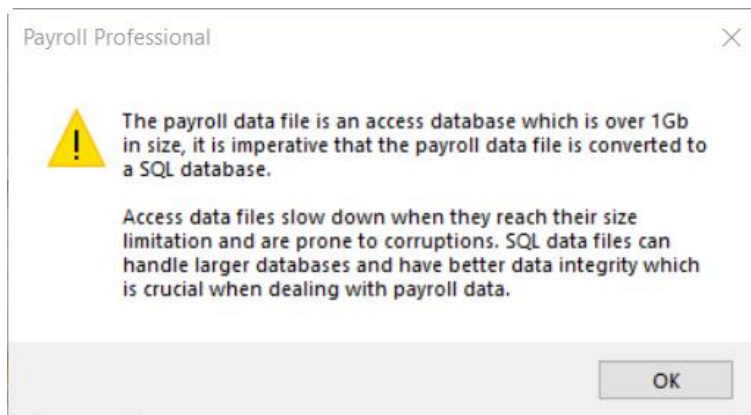
- Over 200mb to 499mb



- Over 500mb to 999mb



- Over 1gb



You can reduce the size of the access payroll data file by:

- **Deleting years** via [Run\House Keeping\House Keeping\Previous Years](#)
- **Purging the Audit trail** via [Data\Audit Settings](#) (audit trail must have been printed or sent to file before it can be purged)

Microsoft Access Databases and Drivers

To enable us in a future release to upgrade the Microsoft Access version for databases and drivers, in this release IPP no longer uses the MCPGloss.mdb, all references to this database have been removed.

Further changes will be implemented in future releases, to remove the use of other central access data bases called MCPTemp.mdb and Tax&NI.mdb. We will keep you informed of the changes via the Release notes.

Table Changes

MCPGLOSS.mdb

This database could be used for reporting and is used within the IPP application.

In this release the following tables have been moved from the MCPGLOSS.mdb to Lookups, which means that if you use these within Custom reports they will need to be replaced with a formula and the database MCPGLOSS.mdb removed from the report.

MCPGloss Table Name	Lookup Name	Reportable	Example replacement formula
AEM_Template_Details	AEM_Template	No	
tblAEM_FeedVersion	AEM_Feed_Version	No	

MCPGloss Table Name	Lookup Name	Reportable	Example replacement formula
tblAEM_Field	AEM_Field	No	
tblAEM_FieldFeedVersion	AEM_Field_Feed_Version	No	
tblAEM_FieldLookup	AEM_Field_Lookup	No	
tblAEM_FieldUIVersion	AEM_Field_UI_Version	No	
tblAEM_PensionProvider	AEM_Pension_Provider	No	
tblAEM_UIVersion	N/A	No	
tblAEM_WorkflowState	AEM_Workflow_State	No	
tblEeFreqBalsFields	Ee_Freq_Bals_Fields	No	
tblNICs_Calculation_Type	NICs_Calculation_Type	Yes	if {NICs.CalculationType}=0 then "Employee" else if {NICs.CalculationType}=1 then "Non Cum Director" else if {NICs.CalculationType}=2 then "Cum Director" else if {NICs.CalculationType}=3 then "Two Letter NIC" else "Unknown"
tblNICs_Override_Level_Type	NICs_Override_Level_Type	Yes	if {NICs.OverrideLevel}=0 then "None" else if {NICs.OverrideLevel}=1 then "Calculation" else if {NICs.OverrideLevel}=2 then "After Period Close" else ""
tblNICs_Type	NICs_Type	Yes	if {NICs.Type}=1 then "Brought Forward" else if {NICs.Type}=2 then "Calculation" else if {NICs.Type}=4 then "Prior Period Adjustment" else ""
tblSQLWizPredefined	Predefined_Queries	No	
tblSQLWizPredefined_Database_Compatibility	Predefined_Query_Database_Compatibilities	No	
tblWordMergeFieldConditions	Word_Merge_Field_Conditions	No	
tblWordMergeFields	Word_Merge_Field	No	

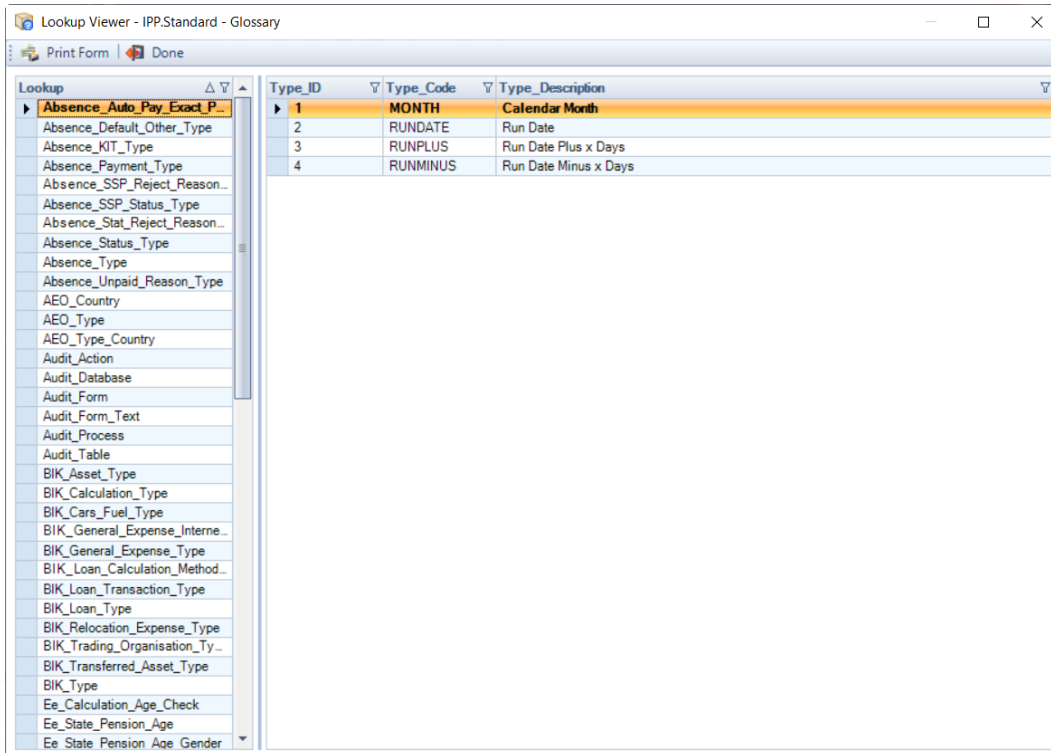
To see a glossary of the tables see the section Lookups.

Lookups

Standard Glossary



Under **Tables** select **Standard Glossary** under the **Lookups** section:



The tables removed from the MCPGLOSS that are still used in IPP are shown under the column Lookup, when you highlight a Lookup table the contents is shown on the right.

Standard Rates

In preparation for removing the Tax&NI.mdb file some of the rates now appear in a raw format under Lookups\Standard Rates, these rates are still in the Tax&NI.mdb.



Under **Tables** select **Standard Rates** under the **Lookups** section:

Lookup Viewer - IPP.Standard - Tax and NI Rates

Print Form Done

Lookup	Tax_Year	Emission_From	Emission_To	Standard_Rate	Additional_Rate_Diesel	Diesel_RT
BIK_Car_CO2_Emissions	2019	0	0	16	4	16
BIK_Car_Electric_Rates	2019	1	50	16	4	16
BIK_Car_Fuel_Scale	2019	51	75	19	4	19
BIK_Misc_Rates	2019	76	94	22	4	22
BIK_Van_Rates	2019	95	99	23	4	23
NI_Bands	2019	100	104	24	4	24
	2019	105	109	25	4	25
	2019	110	114	26	4	26
	2019	115	119	27	4	27
	2019	120	124	28	4	28
	2019	125	129	29	4	29
	2019	130	134	30	4	30
	2019	135	139	31	4	31
	2019	140	144	32	4	32
	2019	145	149	33	4	33
	2019	150	154	34	3	34
	2019	155	159	35	2	35
	2019	160	164	36	1	36
	2019	165	169	37	0	37
	2019	170	174	37	0	37
	2019	175	179	37	0	37
	2019	180	184	37	0	37
	2019	185	189	37	0	37
	2019	190	194	37	0	37
	2019	195	199	37	0	37
	2019	200	204	37	0	37
	2019	205	209	37	0	37
	2019	210	214	37	0	37
	2019	215	219	37	0	37
	2019	220	9999	37	0	37
	2020	0	0	0	4	0
	2020	1	50	14	4	14
	2020	51	54	15	4	15

When you highlight a Lookup table the content is shown on the right.

Fixes

Web ID	Area	Description of bug
2025005	Reports	PAHOL2A\PSHOL2A, PAHOL3A\PSHOL3A - since 2024 update 1, these reports are not including all employees, they are including calculated employees only.
2025007	Internet Downloads and Submissions	DPS Downloading and Manually Matching Tax Codes - in IPP 2025 Update 1, when downloading or manually matching tax code notices for employees where multiple tax code notices have been issued and the program should mark earlier notices as Superseded, you will experience an error referencing MemberID.
2025008	Auto Enrolment Module	<p>Emailing Notices - when trying to Send notices in the Auto Enrolment Dashboard you may experience error 'There are problems emailing using the current settings' referencing MimeKit.</p> <p>You will need to update your Star.Payroll.GUI,exe.config file, please contact support for further information.</p> <p>In addition you may experience a further error similar to the first referencing attachments, please contact support for further information.</p>
2025006	Reports	Print Macros and Automate Employment Allowance - If you have both Employment Allowance - Current year and Automate employment allowance enabled, and Employment Allowance was not enabled for the previous tax year. When you run a Print Macro which includes a P32 report, if Select Year end appears and you select the previous tax year, Employment allowance is recorded for the previous tax year.

Standard Reports

The following pay method report that was deleted in the 2025 Update 1 release has been re-added, as per client requests.

Report	Type	Description
PXRBSAUT	Pay Method	Royal Bank of Scotland Payment Submission Form

All Report Changes

Report	Status	Type	Description
PXRBSAUT	Re-added	Pay Method	Royal Bank of Scotland Payment Submission Form

Custom Reports

After each update, we recommend that you verify your custom reports in Crystal.

Remember that new fields will not automatically be added to your custom reports, you will need to amend your custom report in crystal to add the new fields that you require. Similarly, deleted tables and fields will not automatically be removed from your custom reports.

Database Structure Changes

Throughout the document we have detailed the reportable table and field changes, for those of you who write your own reports to make it easier. Alternatively, go to [File\Print Tables](#) to see all the changes.

On-line Help File

Remember the on-line help contains all the latest information regarding the program.

Index

A

- Access Payroll Data File(s) 6
- All Report Changes 13
- Auto Enrolment Dashboard – Emailing Notices 6
- Auto Enrolment Module 1

C

- Custom Reports 13

D

- Database Structure Changes 13

E

- Employee Details – Benefits in Kind tab 3
- Employee Verification Connector 4
- Enhancements 5

F

- Fixes 11

H

- HMRC Notifications (aka DPS) – Microsoft WSE 2.0 SP3 1

I

- Import menu 5
- Important Information 1

L

- Lookups 8

M

- MCPGLOSS.mdb 7
- Microsoft Access Databases and Drivers 7

O

- On-line Help File 13

P

- Program Changes 4

S

- Standard Glossary 8
- Standard Rates 9
- Standard Reports 12
- Statutory Changes 3

T

- Table Changes 7
- Technical Changes 6

Useful numbers

HMRC online service helpdesk	HMRC employer helpline
Tel: 0300 200 3600	Tel: 0300 200 3200
Fax: 0844 366 7828	Tel: 0300 200 3211 (new business)
Email: helpdesk@ir-efile.gov.uk	

Contact Sales (including stationery sales)

For IRIS Payrolls	For Earnie Payrolls	For IRIS Payroll Professional
Tel: 0344 815 5656	Tel: 0344 815 5676	Tel: 0345 057 3708
Email: sales@iris.co.uk	Email: earniesales@iris.co.uk	Email: payrollsales@iris.co.uk

Contact Support

Your Product	Phone	E-mail
IRIS PAYE-Master	0344 815 5661	payroll@iris.co.uk
IRIS Payroll Business	0344 815 5661	ipsupport@iris.co.uk
IRIS Bureau Payroll	0344 815 5661	ipsupport@iris.co.uk
IRIS GP Payroll	0344 815 5681	gpsupport@iris.co.uk
IRIS GP Accounts	0344 815 5681	gpaccsupport@iris.co.uk
Earnie or Earnie IQ	0344 815 5671	earniesupport@iris.co.uk
IRIS Payroll Professional (formerly Star)	0344 815 5555	payroll-support@iris.co.uk

IRIS is a trademark.

© IRIS Software Group Ltd.

All rights reserved.

IRIS. Look forward